

# Old Mrs Wilson

Traditional - for Goathland Square Eight

A1

Circle left



Circle right



A2

1s & 3s change places (3s arch)

2s & 4s change places (4s arch)



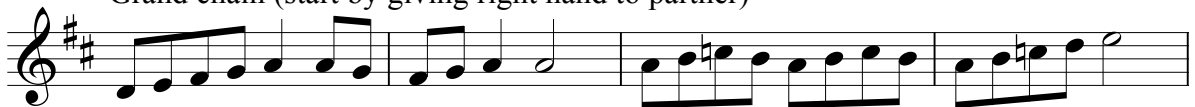
1s & 3s change back (1s arch)

2s & 4s change back (2s arch)



B1

Grand chain (start by giving right hand to partner)

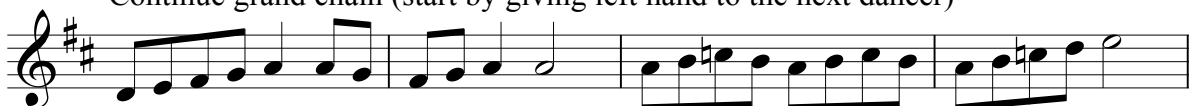


Meet partner & swing



B2

Continue grand chain (start by giving left hand to the next dancer)



Meet partner & swing

